



TSX: **STGO** | OTCQX: **STPGF**

MONGOLIA'S PREMIER PRECIOUS METALS COMPANY

CORPORATE PRESENTATION
MARCH 2022



DISCLAIMER

TECHNICAL INFORMATION

Technical information relating to the Altan Tsagaan Ovoo Project (the “ATO Project”) contained in this presentation is derived from, and in some instances is an extract from, the Technical Report titled “Feasibility Study for the Altan Tsagaan Ovoo (ATO) Phase 2 Expansion Project Mongolia” dated November 30, 2021, with an effective date of October 27, 2021, which was prepared for the Company by DRA Global Limited (DRA), and prepared in accordance with National Instrument 43-101 - Standards of Disclosure for Mineral Projects (“NI 43-101”). Reference should be made to the full text of the Technical Report which has been filed with certain Canadian securities regulatory authorities pursuant to NI 43-101 and is available for review under the Company’s profile on SEDAR at www.sedar.com.

Technical information in this presentation not contained in the Technical Report has been prepared under the supervision of Enkhuvshin Khishigsuren a “qualified person”.

CAUTIONARY NOTE FOR UNITED STATES INVESTORS

Technical disclosure regarding our properties included herein (the “Technical Disclosure”) has not been prepared in accordance with the requirements of United States securities laws. Without limiting the foregoing, the Technical Disclosure uses terms that comply with reporting standards in Canada and certain estimates are made in accordance with NI 43-101. NI 43-101 is a rule developed by the Canadian Securities Administrators that establishes standards for all public disclosure an issuer makes of scientific and technical information concerning mineral projects. Unless otherwise indicated, all mineral reserve and mineral resource estimates contained in the Technical Disclosure have been prepared in accordance with NI 43-101 and the Canadian Institute of Mining, Metallurgy and Petroleum Classification System. These standards differ significantly from the requirements of SEC Industry Guide 7, and resource information contained in the Technical Disclosure may not be comparable to similar information disclosed by U.S. companies.

The definitions of proven and probable reserves used in NI 43-101 differ from the definitions in SEC Industry Guide 7. In addition, the terms “mineral resource”, “measured mineral resource”, “indicated mineral resource” and “inferred mineral resource” are defined in and required to be disclosed by NI 43-101; however, these terms are not defined terms under SEC Industry Guide 7 and normally are not permitted to be used in reports and registration statements filed with the Securities and Exchange Commission (the “SEC”).

Investors are cautioned not to assume that any part or all of mineral deposits in these categories will ever be converted into reserves. “Inferred mineral resources” have a great amount of uncertainty as to their existence, and great uncertainty as to their economic and legal feasibility. It cannot be assumed that all or any part of an inferred mineral resource will ever be upgraded to a higher category. Under Canadian securities laws, estimates of inferred mineral resources may not form the basis of feasibility or pre-feasibility studies, except in rare cases.

Additionally, disclosure of “contained ounces” in a resource is permitted disclosure under Canadian securities laws, however the SEC normally only permits issuers to report mineralization that does not constitute “reserves” by SEC standards as in place tonnage and grade without reference to unit measurements. Accordingly, information contained in the Technical Disclosure may not be comparable to similar information made public by U.S. companies subject to the reporting and disclosure requirements of United States federal securities laws and the rules and regulations thereunder.

OUR VISION

Mongolia's
premier precious
metals company.

Our mandate:

01

Delivering superior returns to shareholders from low-cost, long life precious metals assets.

02

Focusing on low cost production assets with strong exploration upside.

03

Building strong relationships with our partners, our communities and all levels of the Mongolian government.



COMPANY OVERVIEW

Steppe Gold is Mongolia's premier precious metals company, has commenced production and is projected to produce 50,000 to 60,000 ounces of gold from its Phase I Heap Leach Operation at the ATO Gold Mine annually. The Company has recently completed a feasibility study into the Phase II expansion of the ATO Gold Mine to produce ~100,000 of gold ounces equivalent per annum from the development of underlying fresh rock ores.

Investment Highlights:

01. Proven in-country team

Proven track record. Strong social licence to operate and strong support from Mongolian investors.

02. Production Commenced in 2020

Mine fully commissioned and permitted. Initial Phase - I oxide zone is estimated to produce ~ 50,000 to 60,000 ounces of gold annually.

03. Resource expansion

Updated resource estimates recently announced for ATO 1, 2, 4 deposits and initial resource for Mungu deposit, doubling resource to 2.45M oz Au Eq. at ATO Gold Mine.

Bank Coverage:

HANNAM&PARTNERS

STIFEL | GMP

CAPITAL MARKETS
HAYWOOD

OTCQX: STPGF | TSX : STGO

Share Price	USD\$1.40 / CA\$1.77
Current Shares Outstanding	68.9(m)
Mongolian National Fund* (US\$3.0m)	4.3(m)
Warrants & Options - (Strike @\$2.00)	11.3(m)
Warrants - (Strike @\$3.00)	6.98(m)

CAPITAL STRUCTURE:

Mongolian Nationals	16 %
Insiders and Management	15 %
Family Office Investors (US & Europe)	13 %
Eric Sprott	11%
Fidelity International Ltd	6%
Elliot Management/Triple Flag	4%
Others	36%

COMPANY BOARD AND MANAGEMENT



Matthew Wood
Executive Chairman

Mr. Wood is a mineral resource explorer and developer with over 25 years of global industry experience in mining investments. Founder of Hunnu Coal Limited sold for ~A\$500M (2011). Awarded the Order of the Polar Star, the highest state honour that can be awarded to a non-citizen of Mongolia.



Bataa Tumor-Ochir
Director, President and CEO

Mr. Bataa Tumor-Ochir is a Mongolian national responsible for new business acquisitions, development and government and community relations. He is also responsible for daily operations in Mongolia. Mr. Tumor-Ochir has over 10 years of experience in mining industry.



Aneel Waraich
Director and Executive Vice President

Mr. Waraich is a financial services professional with 15 years of progressive experience in capital markets having worked on over \$1B in deals. Founder of ATMA Capital Markets focusing on advising public and private companies in the Natural Resources sector.



Patrick Michaels
Director

Mr. Michaels is the Chairman of Zuri-Invest AG and the Chairman of Asty Capital AG in Zurich, Switzerland. Mr. Michaels has been involved in numerous financings of gold mines in North America as well as various other countries and is a well-respected financial adviser and fund manager throughout Europe.



Jeremy South
Senior Vice President and Chief Financial Officer

Mr. South has over 35 years of experience in M&A, capital markets and private equity in Europe, North America and Australia, including senior positions in investment banking at Deutsche Bank, NatWest Markets and Deloitte. He has been working in Mongolia since 2011.



Dr. Zamba Batjargal
Director

Dr. Batjargal has more than 35 years’ experience working for the government entities in Mongolia dealing with issues of environmental protection and climate change. He was the Minister of the Environment of Mongolia from 1990 to 1996. Dr. Batjargal has extended experience of work outside of Mongolia being engaged in international bi- and multilateral cooperation activities.



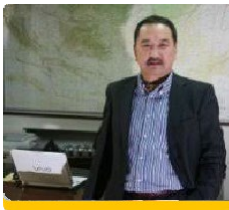
Sereenen Jargalan
Director

Ms. Jargalan has been a professor at the Mongolian University of Science and Technology since September 2003 and head of the Department of Mineral Exploration since 2011 where she teaches Ore Geology and Metallogeny to Bachelors, Masters and Doctorate students.



Steve Haggarty
Director

Mr. Haggarty is the Managing Director of Haggarty Technical Services Corporation and a registered member of the Professional Engineers Ontario. Mr. Haggarty has over 35 years of industrial experience both on-site and at a corporate level, involving several precious metal and copper producers, with a background in project design, commissioning, start-up, metallurgy, process optimization, project management, reclamation and closure.



Enkhtuvshin Khishigsuren
VP of Exploration

Mr. Khishigsuren has over 30 years of Mongolian mineral exploration experience. He has focused his expertise on the precious metals exploration sector resulting in successes for numerous companies.

STEPPE PEOPLE



STEPPE SOCIAL RESPONSIBILITY

Steppe Gold is an integral part of the local community:

We have been building strong local support and relationships for many years, prior to commencing our exploration and production efforts.



Steppe Gold is proud of our local community partnerships, and our repopulation efforts for marmots and local bird species, as part of our local 2021 Biodiversity Offset Program



Steppe has signed a cooperation agreement with the local government, ensuring a beneficial working environment for our people.

Steppe Gold’s first priority is, and always will be, the safety of our people.

Steppe is committed to mitigating and rehabilitating environmental impacts. We support biodiversity offsets, sustainable development and the principles of responsible mining in all of our work.

STEPPE'S **VALUE BUILDING MODEL**

Fast-tracked production and exploration upside

Cashflow

Fully permitted heap leach mine and plant.

Commenced commercial production targeting ~60,000 ounces annually



Development

New resource estimates doubled in 2021.

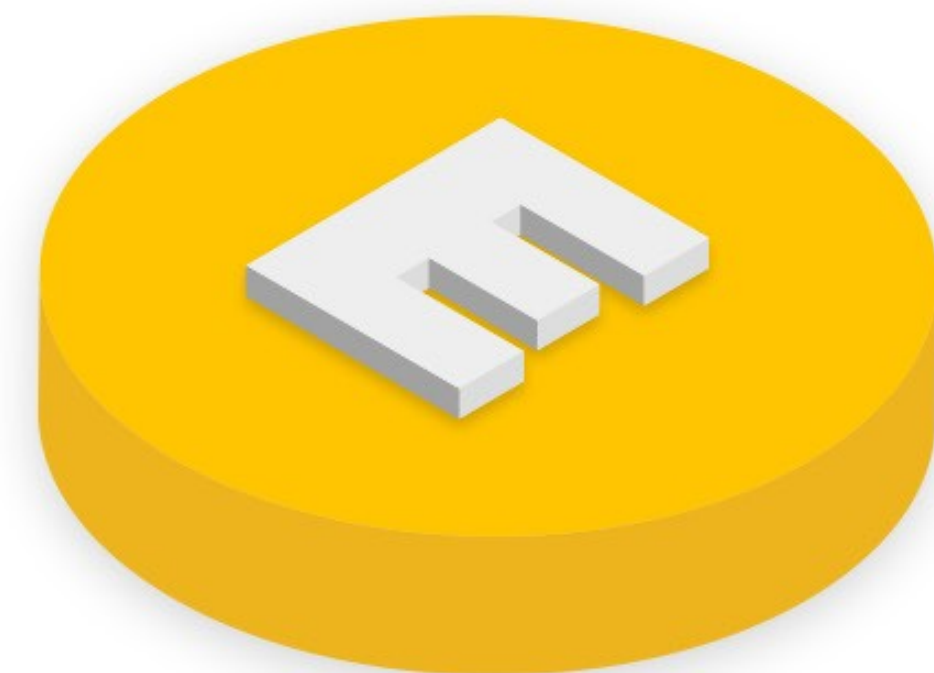
Released feasibility study results, supporting 10+ years mine life and to produce ~ 100,000 ounces annually.



Exploration

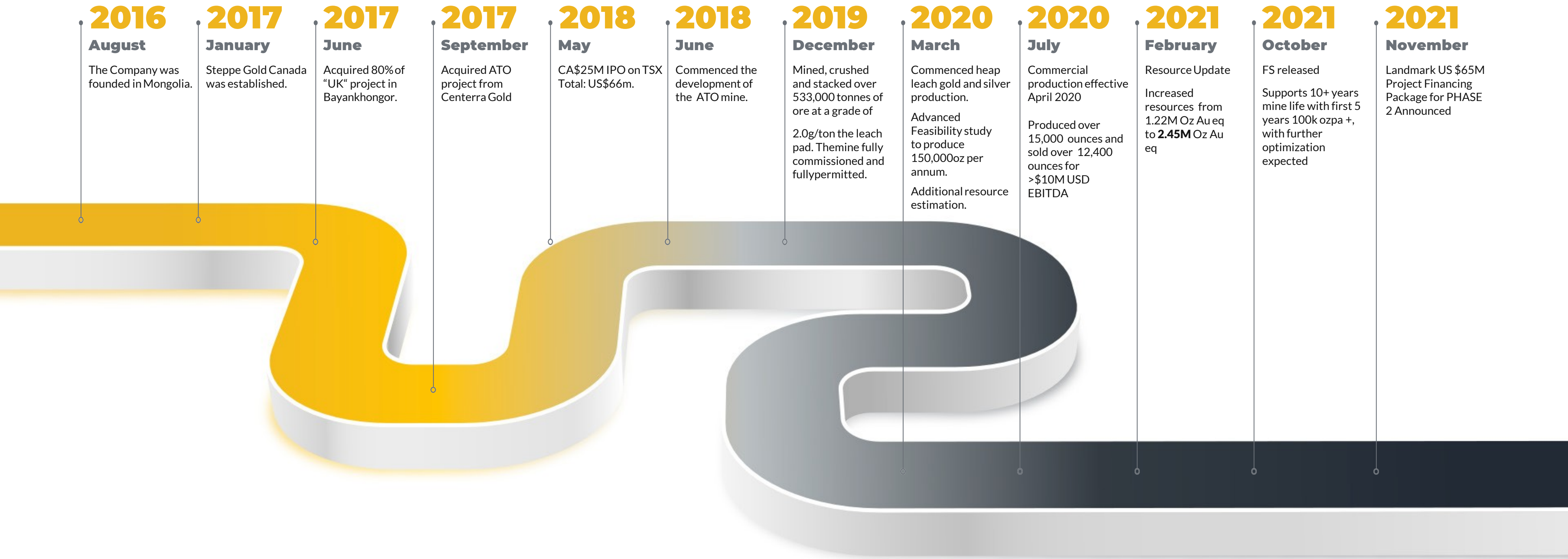
The Company owns one of the largest exploration licences in Bayankhongor gold belt.

Drilling to commence on 4 new discoveries in 2022.



The Company has access to a steady pipeline of exploration and development projects across Mongolia. Currently assessing over 200,000 hectares of exploration licences and several gold projects for 2022.

COMPANY MILESTONES



WHY MONGOLIA



Home to world class assets, sound mining infrastructure and mining talent.



Strong support for mining industry at all levels of government.



Focus on safety, wealth generation and sustainable development.



Developing broad based win-win partnerships with China, Russia and third neighbours founded on the mining industry and related infrastructure.



COMPANY OPERATIONS

Steppe Gold owns exploration, development and production assets.



ALTAN TSAGAAN OVOO (ATO) GOLD MINE

FULLY PERMITTED AND COMMENCED GOLD PRODUCTION IN 2020

LEACH PAD / CELL 1 AND 2

ADR BUILDING / PLANT

CHEMICAL STORAGE
FACILITY

STORM POND

CRUSHER

CRUSHER

PHASE I - OXIDE HEAP LEACH PRODUCTION

50,000 to 60,000 oz of Gold annually

PHASE II - 100,000 oz of gold production annually from fresh rock

ADR PLANT

ALTAN TSAGAAN OVOO (ATO) GOLD MINE



PHASE I - OXIDE HEAP LEACH PRODUCTION

50,000 to 60,000 oz of Gold annually

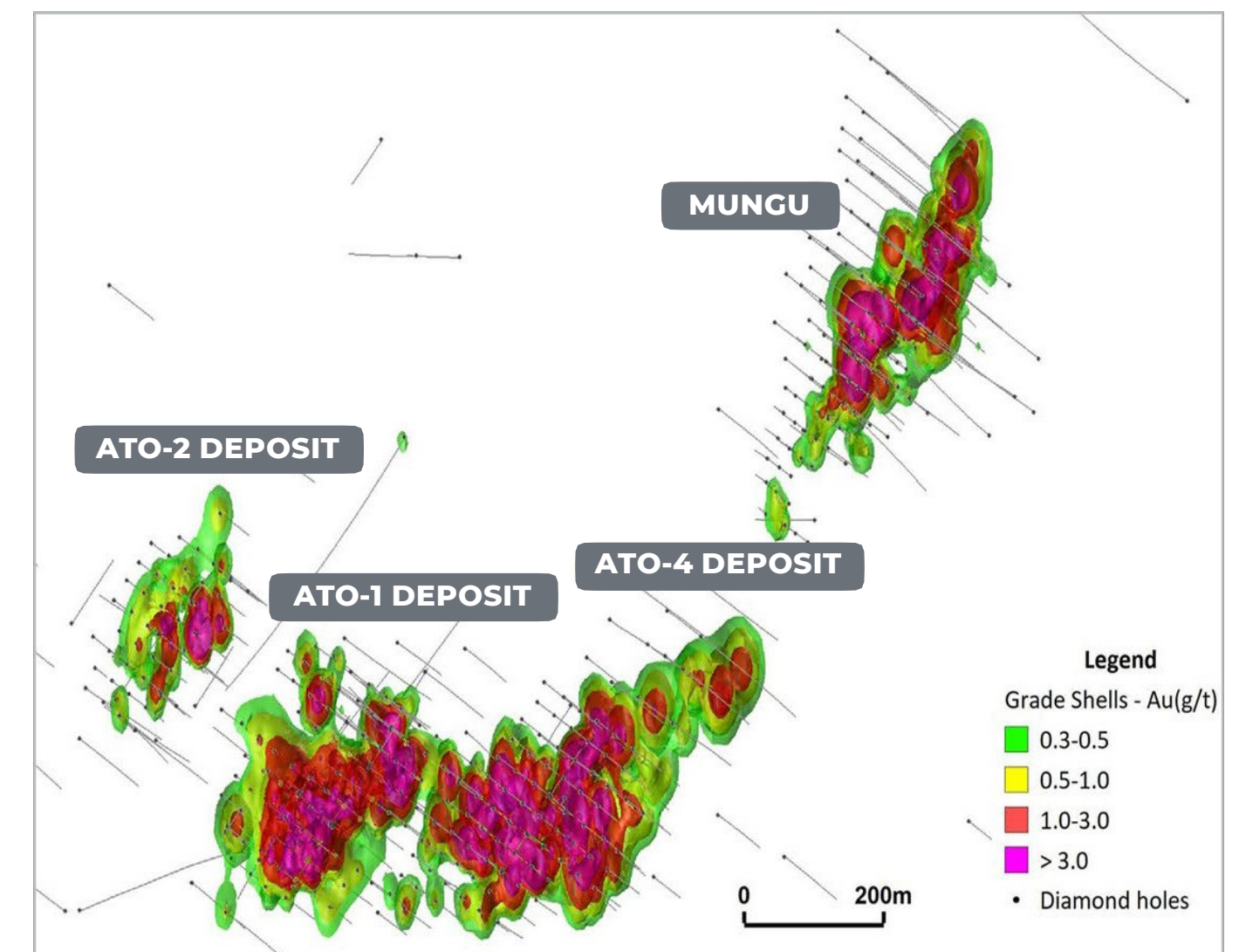
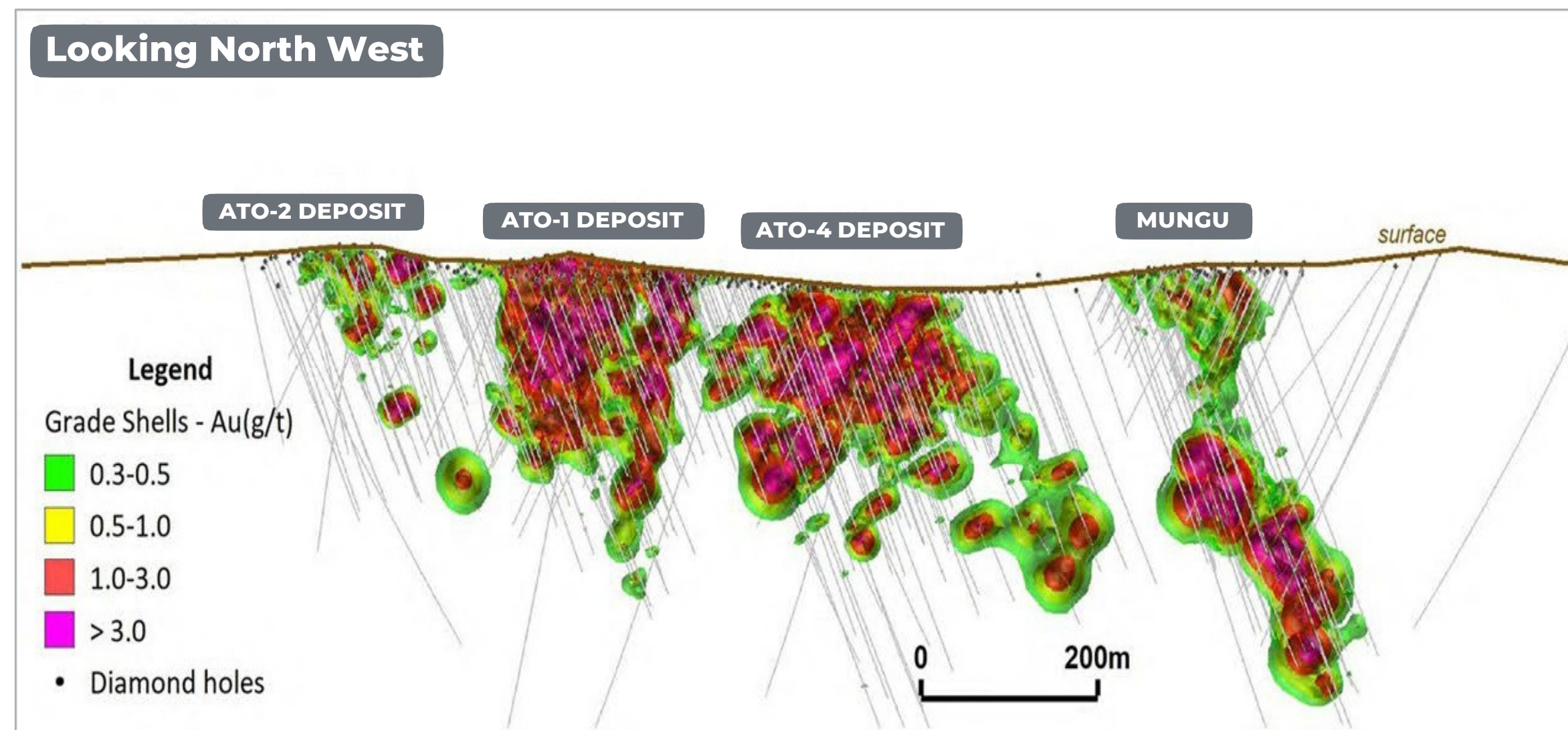
PHASE II - ~ 100,000 oz of gold production annually from fresh rock

RESOURCE EXPANSION

Building on a large dataset - high grade intercepts.

Over 90,000m drilling and 28,421m trenching completed.

Drilling results and new resource estimates for ATO and Mungu deposits released in 2021.



MINERAL RESERVE ESTIMATE, EFFECTIVE JUNE 30, 2021

Phase 2 expansion assumes producing 100,000 ounces of gold equivalent per annum from the fresh rock ore. Gold recovery is forecast to be 79%, with further recoveries of up to 10% through CIP/CIL plant in later years.

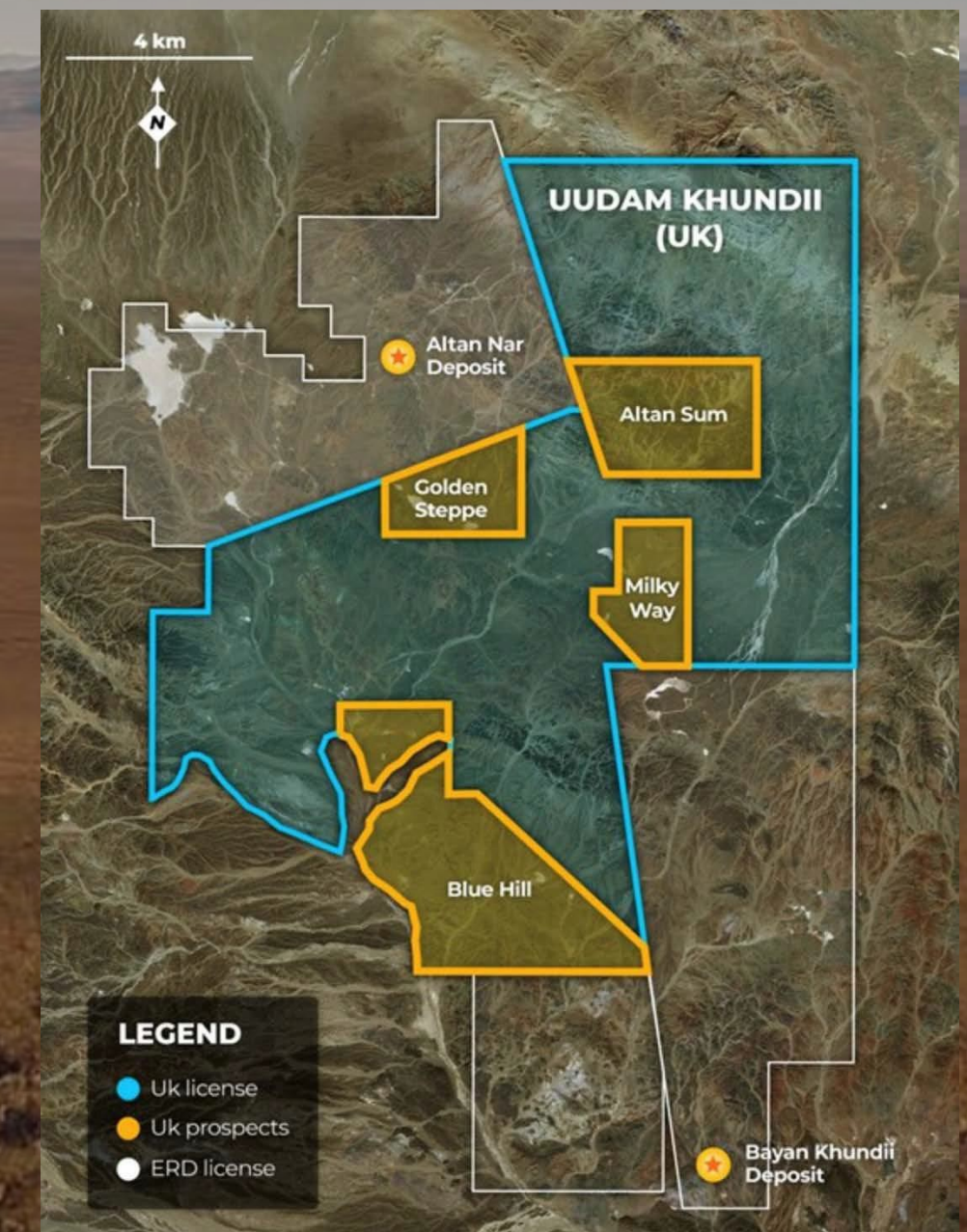
ATO gold mine is estimated to generate 1.72 billion dollars in revenue and over 584 million dollars in earnings before taxes with a CAPEX of \$128m, a rapid payback of capital in 3 years after taxes.

Category	Material	Ore	GRADE					CONTAINED METAL		
			AuEq	Au	Ag	Pb	Zn	Au	Ag	AuEq
		(kt)	(g/t)	(g/t)	(g/t)	(%)	(%)	(k oz)	(k oz)	(k oz)
Combined (ATO and Mungu)										
Proven	Oxide	1,618	1.54	1.45	12.81	0.54	0.40	75	666	80
	Fresh & Transition	13,277	2.10	1.26	8.58	0.53	0.94	536	3,657	897
Probable	Oxide	1,324	1.16	1.01	19.45	0.26	0.20	43	828	49
	Fresh & Transition	10,186	1.69	0.98	13.79	0.37	0.69	316	4,344	550
Proven & Probable	Oxide	2,942	1.37	1.25	15.80	0.41	0.31	118	1,494	130
	Fresh & Transition	3,462	1.93	1.14	10.78	0.46	0.84	849	8,002	1,448
Total		26,404	1.86	1.14	11.18	0.46	0.78	968	9,491	1,579

UUDAM KHUNDII (UK) PROJECT

ONE OF THE LARGEST EXPLORATION LICENCES IN BAYANKHONGOR GOLD BELT

- To date, Steppe Gold has completed 18 trenches for 933 meters at the Milky Way Prospect and the Altan Soum Prospect.
- This work is ongoing with more trenching planned across all four prospects discovered.
- At the Milky Way Prospect initial trenching results have highlighted a mineralized system of at least 700 meters in length and up to 12 metres wide with individual meter sampling results up to 1.49g/t gold, 450g/t silver, 2.98% copper, 3.98% lead and 0.31% Zinc.
- These are exciting early results and the Company is expanding its exploration efforts with a geophysical crew and drilling rig planned to be mobilized to site in the coming month.
- Identified 4 new discoveries and drilling commences soon.



EXCLUSIVE RIGHTS

Uudam Khundii ("UK") Project: Steppe Gold owns 14,400 hectares in a first of its kind, 80/20 JV with the provincial government of Bayankhongor.

HIGHLY PROSPECTIVE AREA

Adjoining licences held by Erdene Resources (ERD)* have discovered high grade gold silver mineralized zones trending on to Steppe's licences.

FUTHER ACQUISITIONS

The Company is currently assessing over 200,000 hectares of exploration licences for further acquisition.

KEY FINANCIAL METRICS

NPV

After-Tax

\$232M

IRR

After-Tax

67%

Site AISC

\$853/oz

EBITDA

\$584M

LoM Phase 1 & 2 = 12.5 years

After-Tax

**3 years
Payback**

Capital Expenditure
Phase 2

\$128M

LoM Grades

Lead, 0.46%
Zinc, 0.78%
Gold, 1.14 g/t
Silver, 11.18 g/t

Total Gross
Revenue

\$1.72 Bn

FS HIGHLIGHTS AND BASIS OF PREPARATION

- ✓ The Feasibility Study covers the ATO Gold Mine with a 12.5 year remaining mine life, with an assumed start date of January 1, 2022.
- ✓ It is based on the revised reserve calculations incorporating 26.4mt at Au Eq grade of 1.86g/t. Mungu remains a promising deposit and the Company plans to more exploration work in 2022.
- ✓ Incorporates 2 full years of oxide production totaling around 100,000 oz, with demonstrable upside from recent grade sampling and drilling.
- ✓ Fresh rock phase of 10.5 years with 23.5mt at Au Eq grade of 1.93g/t, showing very robust economics based on conservative payability. Management expects to improve on payability % given competitive environment from traders and smelters.
- ✓ High net gold recovery from flotation (79%) before penalties and TC/RCs, means that the Company can still recover further gold from tails via CIP in later years. Total Gross Revenue of \$1,72 Bn and EBITDA of \$584m.
- ✓ Rapid payback of capital (3 years) after tax basis, conservative price deck, Site AISC of \$853/oz (including TC/RC) and annual Au eq of 106,080 oz (gross) in first 5 years, with multiple options available for optimizing and reserve expansion.
- ✓ Robust economics from project derives from proven low-cost track record on capex and operations - ATO is already a producing gold mine with much of the infrastructure.

MINING

Highlights:

- ✓ 923,928 tonnes total mined for 2021.
- ✓ ROM pad balance as at 31st December was 552,594 tonnes at an average grade of 1.2g/t.



PHASE 2 EXPANSIONS INFRASTRUCTURE

Highlights:

- ✓ Camp sewerage construction has been completed.
- ✓ Boilerhouse has been completed and is currently operating.
- ✓ Stage 2 crusher construction is ongoing. Delivery of crushing equipment has commenced.
- ✓ Chemical storage expansion construction has commenced.
- ✓ Explosive magazine has been completed.



CATALYSTS & PHASE 2 EXPANSIONS

- ✓ Production: Back Online - Reagents Repleted & first winter with new boiler house
 - 2.45m tonnes of ore stacked on the leach and ROM pads.
 - Total of 81,842 ounces of recoverable gold (approx. \$147M at \$1,800/oz from ROM & unleached areas).
- ✓ Feasibility Study complete and headline numbers released October 27, 2021
- ✓ Landmark US\$65M financing package = Fast-tracking Phase 2 construction
- ✓ Working on a further tranche of debt with an international lending syndicate
- ✓ Exploration programs on ATO and UK licences - ~20,000m
- ✓ Exploring the option of a listing on a major Asian stock exchange

RECENT **SUCCESSES**

Steppe Achieves

92.9

Implementation Score
on Environmental
Management Plan

Bloomberg Mongolia recognizes Steppe's ATO Gold Mine as 2021 Development of the Year



CONTACT

Matthew Wood

Executive Chairman

mwood@steppegold.com

Bataa Tumur-Ochir

President and CEO

bataa@steppegold.com

Aneel Waraich

Director and Executive VP

aneel@steppegold.com

Jeremy South

Senior VP and CFO

jeremy@steppegold.com

The Company's Head Office:

Shangri-La office, Suite 1201, Olympic street 19A, Sukhbaatar District 1,
Ulaanbaatar 14241, Mongolia, Tel/Fax: +976 7732 1914

Toronto Office:

90 Adelaide Street. W, Suite 400

Toronto, ON, M 5 H 3V9, Canada Tel: +1 647 951 6506

